



# HANCOCK COUNTY CR 600 W & 300 N IMPROVEMENTS

**A PRIORITY PHASE**

- Stage 2 (60%) Plans Complete
- Group IV Funds approved for Land Acquisition

**B**

- Stage 2 (60%) Plans Complete

**C**

- Stage 1 (30%) Plans Complete

**D**

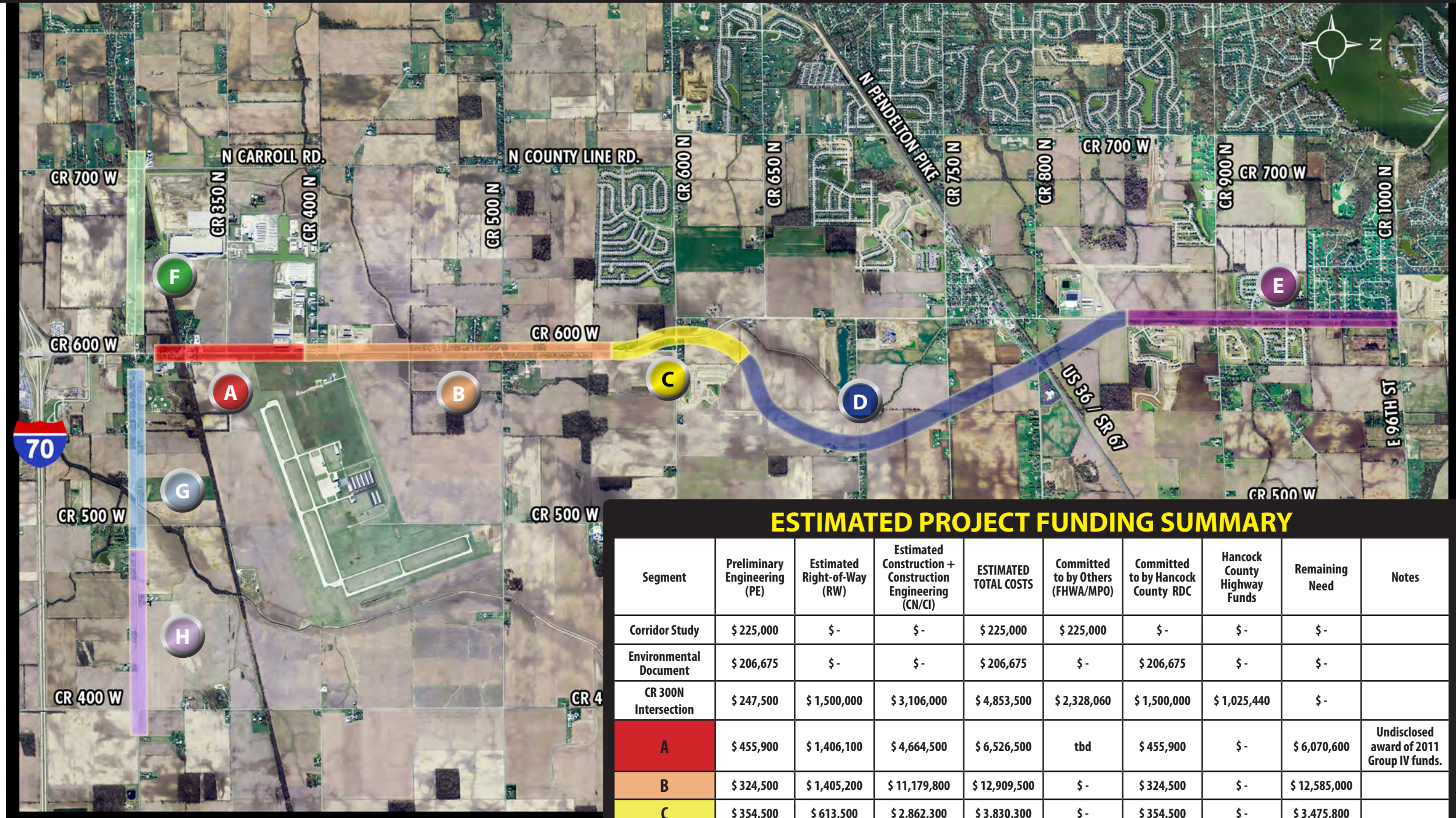
- Realignment adopted into Thoroughfare Plan & agreed to by Town of McCordsville
- Survey of adopted Alignment Scheduled

**E**

- Stage 2 (60%) Plans Complete

**F**

- Stage 2 (60%) Plans Complete



**G PRIORITY PHASE**

- Stage 2 Plans (60%) Complete
- Group IV Funds approved for Land Acquisition

**H**

- Stage 2 Plans (60%) Complete

## ESTIMATED PROJECT FUNDING SUMMARY

Segment	Preliminary Engineering (PE)	Estimated Right-of-Way (RW)	Estimated Construction + Construction Engineering (CN/CI)	ESTIMATED TOTAL COSTS	Committed to by Others (FHWA/MPO)	Committed to by Hancock County RDC	Hancock County Highway Funds	Remaining Need	Notes
Corridor Study	\$ 225,000	\$ -	\$ -	\$ 225,000	\$ 225,000	\$ -	\$ -	\$ -	
Environmental Document	\$ 206,675	\$ -	\$ -	\$ 206,675	\$ -	\$ 206,675	\$ -	\$ -	
CR 300N Intersection	\$ 247,500	\$ 1,500,000	\$ 3,106,000	\$ 4,853,500	\$ 2,328,060	\$ 1,500,000	\$ 1,025,440	\$ -	
<b>A</b>	\$ 455,900	\$ 1,406,100	\$ 4,664,500	\$ 6,526,500	tbd	\$ 455,900	\$ -	\$ 6,070,600	Undisclosed award of 2011 Group IV funds.
<b>B</b>	\$ 324,500	\$ 1,405,200	\$ 11,179,800	\$ 12,909,500	\$ -	\$ 324,500	\$ -	\$ 12,585,000	
<b>C</b>	\$ 354,500	\$ 613,500	\$ 2,862,300	\$ 3,830,300	\$ -	\$ 354,500	\$ -	\$ 3,475,800	
<b>D</b>	\$ 2,061,000	\$ 440,100	\$ 19,023,750	\$ 21,524,850	\$ -	\$ 2,061,000	\$ -	\$ 19,463,850	
<b>E</b>	\$ 439,100	\$ 865,100	\$ 6,805,200	\$ 8,109,400	\$ -	\$ 439,100	\$ -	\$ 7,670,300	
<b>F</b>	\$ 455,200	\$ 1,443,200	\$ 7,102,000	\$ 9,000,400	\$ -	\$ 455,200	\$ -	\$ 8,545,200	
<b>G</b>	\$ 741,100	\$ 2,837,300	\$ 8,437,500	\$ 12,015,900	tbd	\$ 741,100	\$ -	\$ 11,274,800	Undisclosed award of 2011 Group IV funds.
<b>H</b>	\$ 192,280	\$ 909,100	\$ 6,069,100	\$ 7,170,480	\$ -	\$ 192,280	\$ -	\$ 6,978,200	
<b>TOTAL</b>	\$ 5,702,755	\$ 11,419,600	\$ 69,250,150	\$ 86,372,505	\$ 2,553,060	\$ 6,730,255	\$ 1,025,440	\$ 76,063,750	